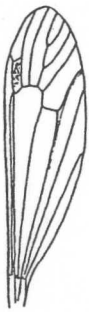


KEYS TO TIPULIDAE

KEY TO GENERA

1. Wing with open discal cell.
Tarsi mainly white, body dark
[the White-footed Ghost].



DOLICHOPEZA
(albipes)

- Discal cell closed. Tarsi dark.



NEPHROTOMA

2. Antennal flagellar segments with a basal whorl of bristles (sometimes some extra ones as well).



3

- Flagellar segments lack a basal whorl of bristles (but there may be a few dorsally or towards apex).



5

3. Yellow thorax with strong black stripes on top. [Tiger craneflies]

- Thorax never yellow but orange, brown or blackish; with or without stripes.

4. Chocolate-brown species with hairy postnotum. Top of thorax without stripes. Male genitalia with a long ventral tab (that can retract almost out of sight).



NIGROTIPULA
(nigra)

- Not this colour. Postnotum bald or with pale hairs. Top of thorax often with stripes.

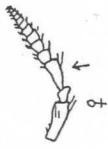
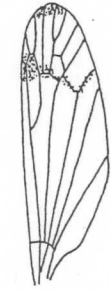
TIPULA

5. Drab grey brown body; wings clear, stigma faint. Flagellum without any bristles; often serrate, especially in male..

PRIONOCERA

- Shining black or coloured body; wings with a black stigma or membrane marked. Flagellum with some small bristles, in male with pectinate processes. [Comb-horned craneflies]

6

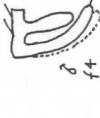


DICTENIDIA
(bimaculata)

7

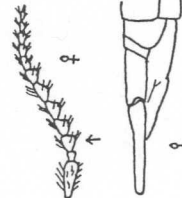
- Wings without this pattern.

7. Male middle flagellar segments, with a pair of basal combs and one apically. Female antennal segment 3 very elongate. Male genitalia a smooth streamlined oval capsule. Female ovipositor very long and upcurved.



TANYPTERA

- Male middle flagellar segments, with a pair of basal and a pair of apical combs. Female antennal segment 3 very short. Male genitalia blunt ended, often with processes. Female ovipositor not markedly long.



CYENOPHORA